

OKLAHOMA DISCIPLES FOUNDATION, INC. **ANNUAL REPORT**

18

*A Nonprofit Religious Organization Supporting
Christian Church (Disciples of Christ) Churches In Oklahoma*





OKLAHOMA DISCIPLES FOUNDATION

TABLE OF CONTENTS

INTRODUCTION

Message from **The Executive Director** 4

OVERVIEW

Oklahoma Disciples Foundation **At a Glance** 6
Foundation **Accounts & Growth**

OUR PURPOSE

Mission & **Vision** 8

ACHIEVEMENTS

Oklahoma Disciples Foundation **Programs** 10
2018 **Highlights** 10
Our **Work** 12
New **Funds** 13
Products **Donor Advised Funds/Field of Interest Funds** 13

BOARD & STAFF

Board of **Directors** 14
Foundation **Organization/Staff** 17

IMPACT

Purpose **Endowments** 18
Service **Grants** 18
Annual **Seminars/Events** 18
Payments **Gift Annuities** 19
Beneficiaries **Charitable Remainder Trusts** 19

ADDITIONAL PRODUCTS/PROGRAMS

Product **Planned Giving/Stewardship** 20
Results **Endowment Distributions** 21
Churches **Custodial Funds** 21

FINANCIALS

Financial Report **Transparency** 22

GOALS

On the Horizon: **Goals** 24

Photo left
ODF sponsored a stewardship seminar in
Moore, OK. Dr. Clif Christopher, Founder
of Horizons Stewardship, presenting "Not
Your Parents' Offering Plate."

OKLAHOMA DISCIPLES FOUNDATION, INC.

MESSAGE FROM
THE EXECUTIVE DIRECTOR

♦

Eric S. Gray



Dear Disciples:

The Oklahoma Disciples Foundation has a long history in Oklahoma serving the Disciples community for more than 53 years. Through the years the Foundation has remained true to its purpose through expanded services to donors, Disciples churches and institutions as well as the beneficiaries of more than 125 endowment and custodial funds.

In 2018 the Oklahoma Disciples Foundation began the year on a high as the Foundation had just celebrated exceeding \$20 Million in assets for the first time at 2017 year-end. In addition and as a result of endowment fund investment performance, the Foundation was delighted to distribute more than \$71,400 through grants to Disciples churches and non-profit

The grant program has made significant impact in Disciples communities enabling local churches to continue the work of the Kingdom of God.

related organizations within Oklahoma and Kansas for missions and area ministry programs. The Grant Committee, under the leadership of Steve Armbruster, was tasked with the responsibility of allocating the \$71,400-plus grant funds among 2018 grant requests totaling more than \$185,000. Nineteen of the 28 applicants received full or partial funding for local outreach, ministry and mission. The grant program has made significant impact in Disciples communities enabling local churches to continue the work of the Kingdom of God.

In the spring of 2018, the Foundation sponsored a stewardship event for pastors and church leaders at First Christian Church in Moore. Noted author, pastor and speaker Dr. Clif Christopher, founder of Horizons Stewardship in Arkansas, shared stories and insight about his experiences within the church relating to generosity and stewardship with focus

on his popular book, "Not Your Parents' Offering Plate." More than 50 Disciples attended the informative event and several have requested similar future events. During 2018, the Board of Directors authorized and established Field of Interest Funds. The funds provide a tool for Disciples to aggregate contributions into a single year and disburse

It is important to share who we are and what we do for the church and church members. Our founders had great passion for the church and its continued growth. Their insight into establishing permanent endowments to support the future of the church was admirable. It is vitally important we continue this legacy and remind that "Together We Touch Lives."

those contributions and/or the earnings in future years. These types of funds are useful in personal tax planning as well as tax avoidance on the income earned from the fund. They are also an excellent instrument to teach children about philanthropy and donor values.

We were also pleased to add four new members to the Foundation's Board of Directors in 2018. Our board consists of 17 volunteer members from Disciples churches across Oklahoma. We are continually grateful to these men and women for their guidance, expertise, service and commitment to the Foundation and church. The new board members commencing three-year terms as of 2018 were: Sei Touthang, Yale Avenue Christian Church, Tulsa; John Peach, First Christian Church, Hennessey and Robert (Bob) Weitzel, South Grand Lake Christian Church, Langley. Sadly our fourth member, Steven Cox, First Christian Church, Durant, unexpectedly passed away before our February 2018 meeting. Steven was looking forward to serving on the Board and sharing his marketing talents with the Foundation. We miss his presence and excitement for our work.

In October we promoted our first Foundation Sunday to Oklahoma Disciples churches. A bulletin insert was sent to churches to be placed in church bulletins on Sunday, October 28. It is important to share who we are and what we do for the church and church members. Our founders had great passion for the church and its continued growth. Their insight into establishing permanent endowments to support the future of the church was admirable. It is vitally important we continue this legacy and remind that "Together We Touch Lives."

A handwritten signature in blue ink that reads "Eric S. Gray". The signature is fluid and cursive, written on a light-colored background.

ERIC S. GRAY
Executive Director

OKLAHOMA DISCIPLES FOUNDATION AT A GLANCE

Since the 1960s

ACTIVITY OF OKLAHOMA DISCIPLES FOUNDATION

The Oklahoma Disciples Foundation (ODF) is the product of a 2001 merger of the Oklahoma Christian Foundation (OCF) and the Northeast Oklahoma Christian Foundation (NEOCF). These two entities had been serving as the repositories of endowments for

Minister of Faith and Giving and immediate past Executive Director; Julie Bowers, Development Associate; and Holly Day, Administrative Assistant.

ODF utilizes the professional money management services of Bank of Oklahoma and invests pursuant to the Foundation's Investment Policy. Account performance on all classes of investments with Bank of Oklahoma are shown on page 7, Fig. 2.

In February of each year, earnings on named endowments for the previous year are paid to beneficiaries. ODF distributions benefit a variety of ministries and programs of the Christian (Disciples of Christ) Church in Oklahoma. From 12/31/14 to 12/31/18, the principal invested in named endowments has increased 42.5% while FMV (fair market value) has increased 26.6%. See line graph page7, Fig. 3.

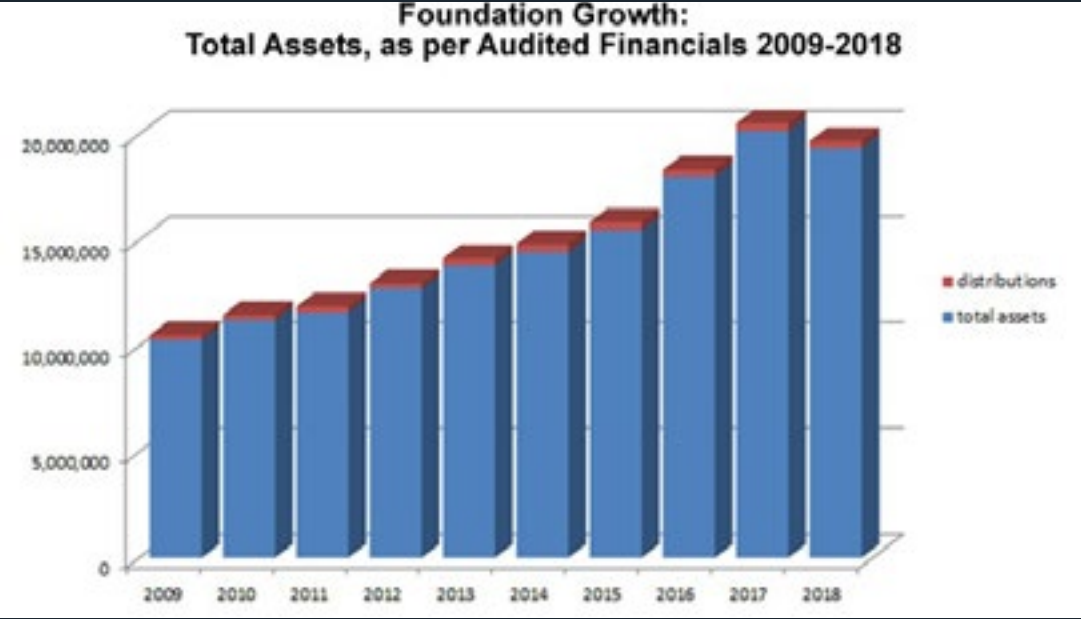
Annual distributions are made to beneficiaries of our funds in accordance with our donors' directions and intention as well as our policies, including a formal [Spending Policy](#) and [Investment Policy](#). All policies and official documents are available on our website at www.okdfd.org or on request.

The Foundation is an independent non-profit Oklahoma corporation governed by a volunteer Board of Directors representing Christian Church (Disciples of Christ) members from all areas of the State of Oklahoma.

Daily activities of the Foundation are the responsibility of the small Foundation staff: Eric Gray, Executive Director; Dr. Vicki Rose, Director of Operations; Rev. Dr. Kyle Maxwell, part-time

OKLAHOMA DISCIPLES FOUNDATION GROWTH

Fig. 1



OKLAHOMA DISCIPLES FOUNDATION ACCOUNTS

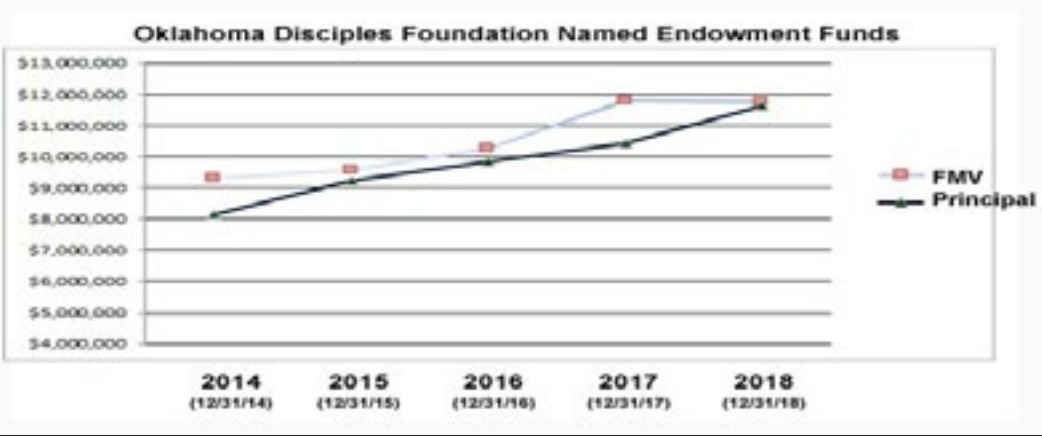
Fig. 2

Accounts	Balance 12/31/2018	Returns % YTD, Net of Fees	Performance Results Since Inception, Net of Fees
Named Endowments	\$8,926,593	-5.89%	3.02% (11/16/2016)
Named Endow-Custodial-Perpetual	\$1,778,376	-6.22%	1.83% (04/01/2017)*
Named Endow-Custodial-GenInvest	\$1,013,365	-7.17%**	-4.77% (04/18/2018)*
Named Endow-Custodial-IncGrowth	\$64,748	-5.82%**	-3.04% (04/18/2018)*
Howard Operating Endowment	\$5,746,458	-5.98%	3.08% (11/16/2016)
CRUTs	\$156,052	-6.14%	3.10% (11/16/2016)

*Previously, the Custodial Funds were included with the Named Endowments. In April 2017, BOK created a separate account for these funds. In April 2018, custodial funds were further classified as Perpetual (maintaining previous investment alternatives) or General Investment or Income with Growth.
**GenInvest & IncGrowth custodial fund categories' percentages shown as YTD in the above table are "3-month" figures, as per BOK, having been separately established in April 2018.

OKLAHOMA DISCIPLES FOUNDATION NAMED ENDOWMENT FUNDS

Fig. 3



ORGANIZATION
MISSION & VISION

Oklahoma Disciples Foundation, Inc.

MISSION

We are Oklahomans and members of local Oklahoma congregations. We are easily accessible to our donors, beneficiaries and the local churches. We concentrate on the programs and ministries affecting or relating to the Christian Church in Oklahoma but we strive for the advancement of God’s work everywhere. In the past ten years we have distributed over \$3.2 million to the beneficiaries of our endowments (an average of \$329,278 per year) while growing the overall pool of assets. We endeavor to maintain quality in our mission as well as prudence, consistency and faithful obedience to God.

*Our mission is to sustain an enduring financial basis for Christ’s ministry through the prudent investment of funds to ensure a legacy of Christian principles and institutions.
— Mission Statement Adopted 05.13.2008*

The work of the Foundation and the benefits of that work depend on members of the Christian Church knowing what is available to them and to their churches. By simply being educated about what the Foundation has to offer and, when appropriate, sharing that knowledge allows the Church to grow and support its mission and ministry now and in the future.

The Foundation and the Church are dependent upon the faithfulness of the people to respond generously to the needs of the community within and outside the church. Generous people are charitable and joyful people. What will be your legacy? Will your generosity enable the work of the church well into the future? Will you lead so others may follow?

Your willingness to give generously allows us to continually increase the support for the beneficiaries of the existing funds and/or create new funds for perpetual funding of God’s work.

VISION

The Oklahoma Disciples Foundation strives to be the premiere choice of those individuals and churches wishing to create a legacy through an investment in the future of the Christian Church. ODF is known for being an extraordinary steward of the funds of which it is entrusted and therefore making a positive impact. The relationships ODF has built have resulted in significant investments in ODF funds to support God’s ministry today and well into the future. The impact of those funds will continue to enable Disciples to be the hands and feet of Jesus.

Photo top

Sam & Mary Howard (Tulsa, OK). Sam helped establish the Northeast Area Christian Church Foundation and the Oklahoma Christian Church Foundation.

Photo bottom left to right

Lloyd & Lucille Christensen (Tulsa, OK). Bill & Millie Cress, (Oklahoma City, OK).



CORE VALUES

PROFESSIONALISM
Knowledge

Executive Director Eric Gray is a longtime Disciples member and previously served on the Board 10 years. Eric is admitted to practice law in all Oklahoma State and Federal courts, the Tenth Circuit Court of Appeals and the United States Supreme Court. He currently serves on the Board of the Oklahoma Association of Charitable Gift Planners as President. He is a registered securities agent and recently received the Charitable Advisor in Philanthropy® designation (CAP®).

Rev. Dr. Kyle Maxwell earned his B.A. from Phillips University, completed a Master of Divinity from Harvard Divinity School, and was awarded a Doctor of Divinity from Phillips Theological Seminary. Rev. Maxwell has received certification in Fund Raising Management and is a registered securities agent.

STEWARDSHIP
Working for the Kingdom of God

We believe good stewardship is the basis for living a Christian life. Stewardship of time, talents and money are vital in our relationships with God and with each other. Through the year we bring the message of good stewardship and generous living to Disciples congregations across the state by sponsoring seminars and providing other educational opportunities.

RESOURCE
Serving Disciples

We serve as a resource for church stewardship, planned giving, grant funding and financial trustee. We utilize an outside money manager to invest funds according to Spending/Investment Policies and have many other policies in place to assure prudence in work. We also serve as an institutional memory for the church.



OKLAHOMA DISCIPLES FOUNDATION
PROGRAMS & HIGHLIGHTS

Programs ♦ Grant Funds ♦ Stewardship

HISTORY AND PROGRAMS



The Chalice Society

Our legacy society — "The Chalice Society" was formed to recognize the generosity and faithfulness of individuals and extinct congregations today and tomorrow. Currently, a plaque with 84 nameplates honors those members.



Thanks to the generosity of Sam & Mary Howard and their estate, ODF created a matching funds program where ODF matched 50 cents on each dollar for each newly-created endowment fund.

2018 HIGHLIGHTS

A [perpetual legacy plaque](#) listing charter members of the "Chalice Society" was unveiled. The plaque is displayed on a wall at the Disciples Center.

The Oklahoma Conference of Churches' (OCC) Dr. Bill Tabbernee Fund was the last new endowment fund to be matched through Howard Million-Dollar Matching Program. In the spring of 2018 ODF matched \$25,600 to the capital campaign funds raised by OCC in honor of Dr. Tabbernee's work with OCC. He retired from OCC in March 2018 after eight years as Executive Director.

ODF received 28 applications totaling more than \$185,000 in requests for [grant funding in 2018](#). Approximately \$71,400 was awarded to 19 grantees.

The ODF administrative fee charged to named endowments was waived and will be revisited annually.



The Foundation's Grants Program has impacted lives, touched many and made a difference in communities. In 2018, the second year of the Grants Program, the Foundation made grants totaling \$71,460.60.



Executive Director, Eric Gray, implemented an annual "Board Orientation" for new and current board members.

Photos left page. From left to right, top to bottom:

Life-long Disciples and Chalice Society members Carl and Armelda Linton bequeathed a portion of their estate to ODF to continue the work of Christ in Oklahoma (click the photo or the ODF Chalice Society logo to view the Chalice Society video).

Mission Camp 2018 Blockbuster, Stillwater FCC, was a 2018 grant recipient. Campers created a puppet show for daycare children.

The Oklahoma Conference of Churches Bill Tabbernee Endowment Fund was the last new endowment with ODF to receive matching funds from the Howard Million-Dollar program.

2018 Board members (left to right): Craig Moore, Claire Meredith, Mickey Moery, David Eck and Frank Gresh.

Photos right page top to bottom:

Disciples Center, Oklahoma City, location of ODF offices. Oklahoma State Capitol Building in Oklahoma City.



WE ARE
OKLAHOMANS FOR
OKLAHOMA DISCIPLES'
CHURCHES AND MEMBERS

"ODF allows us to be participants in loaves-and-fishes miracles. We are in a great place to provide guidance and help people, churches, ministries, and missions multiply their gifts for the betterment of Christ's ministry in Oklahoma."
— Frank Gresh, Board Chairman

"ODF provides a way to give a gift that keeps on giving and a way to be the hands and feet of Jesus in Oklahoma."
— Claire Meredith, Board Member

"ODF helps sustain ministries that don't have the cash flow and ODF reaches into other areas of the state."
— Kathy Standridge, Board Vice Chair and Marketing Committee Chair



Photo top left:
First Christian Church, Edmond, OK, is the beneficiary of four permanent endowment funds to support mission trips, recruiting ordained ministers, building maintenance and various programs and ministries within their church.



Photo bottom left:
2018 grant recipient, Midwest Boulevard Christian Church, Midwest City, hosts annual "Christmas for Others" outreach ministry to feed, clothe and provide new Christmas gifts to school children and families in need.



Photo right:
Closing worship ceremony for summer church Camp at Central Oklahoma Camp, Guthrie, OK. Several permanent endowments provide funding for camps including the "Leave No Child Behind" Disciples Men Endowment providing funds to reduce the cost of camp tuition.

OUR WORK NEW FUNDS

Within Oklahoma and Beyond

"Simple words cannot fully express In The Spirit Christian Church family and the ministry recipients (seniors, youth and children) that your grant gift will touch. Being able to build a ramp at the church back entrance means a lot. However, what means more is that you thought enough of us to help."
— Sharyn Crosby, Tulsa Pastor

"Thank you for approving our grant request. We are excited about how the Ministry Training Program will assist ministry training across the denomination."
— Geoff Brewster, Phillips Theological Seminary Stewardship Director

"Thanks to the ODF for helping to fund the 2018 Leave No Child Behind Camp Scholarship Program! Another year of Regional Youth camping has come and gone with 223 young persons participating in Discovery, Chi Rho, Junior, and CYF Conference. These individuals got to experience the wonder of nature, personal fellowship, and the calling of God as they worked, played, and prayed in a setting that reminds them of God's wonderful creation!"
— John Gauldin, Oklahoma Disciple Men's Treasurer

During 2018, a number of dedicated Disciples made monetary donations to 21 endowment funds including the creation of three new endowment funds: 1) the Millie Cress Memorial Fund to benefit children and youth ministries at New Covenant Christian Church and Western Oaks Christian Church, both in Oklahoma City; 2) the Scott & Mona Baird Endowment to provide ongoing funding to strengthen the ministry and service of ordained women ministers in Oklahoma; and 3) the Tabbernee Fund to support the continuing ministries of the Oklahoma Conference of Churches (OCC). This fund was established in recognition of Rev. Dr. William Tabbernee's service as Executive Director of OCC from 2010 to 2018 and it was the last endowment to receive matching funds through the Foundation's Howard Million-Dollar matching program.

Additionally, three new Custodial Funds were established: 1) the Curtis L. & Thelma Horra Memorial Fund, Central Christian Church, Enid, to be used for Caregivers – Senior Adult Ministry programs at the church; 2) the Del City Christian Church Custodial Fund; and 3) the Perry First Christian Church Custodial Fund.

Disciple Club gifts underwrite the operations of the Foundation. These funds enable ODF to provide educational opportunities, assist individuals with stewardship goals, offer consultation with congregations on gift policies as well as provide asset transfer options and guidance to churches closing or downsizing.

ODF also offers Donor Advised Funds and Field of Interest Funds as products to charitable donors seeking tax savings.

BOARD OF DIRECTORS

The Board of Directors

OUR BOARD
Oklahoma Disciples Foundation

Board members are members of a Christian Church (Disciples of Christ) in Oklahoma representing the five areas of the state (northeast, northwest, central, southeast and southwest). Directors are elected for a term of three years. Directors are eligible for no more than three consecutive terms.

REV. PAM HOLT Regional Minister
Tuttle

The Regional Minister of the Christian Church (Disciples of Christ) in Oklahoma has a nonvoting ex-officio membership on the Foundation board.



FRANK GRESH Board Chair
Edmond

Frank is the Chief Information Officer (CIO) for the Emergency Medical Services Authority (EMSA) in Oklahoma City and Tulsa. In his role as the CIO, Frank is responsible for all aspects of technology including computer systems, radio systems, and clinical technology. Frank, his wife Debby and daughter are longtime members of First Christian Church, Edmond.



KATHY STANDRIDGE Vice-Chair
Sulphur

Kathy is a long-time member of First Christian Church, Sulphur. She attended First Christian Church, Edmond, as a child where she was baptized. Kathy has been actively involved in her church serving in many capacities from board member to chairman of the youth and worship committees. She is currently Children and Youth Director at the church.



CRAIG MOORE Secretary
Oklahoma City

Dr. Craig Moore, originally from Hobart, currently resides in Oklahoma City with his wife, Ruth. They are longtime Disciples and attend First Christian Church, Norman. Dr. Moore graduated with honors from the University of Oklahoma College of Medicine. He is a Family Medicine Specialist. He and Ruth are active in the Association of Disciples Musicians.



STEVE ARMBRUSTER
Stillwater

Steve is a lifelong Disciples member as is his wife, Patty. He was reared on a beef cattle and wheat farming operation near Burlington, OK, in Alfalfa County and now resides in Stillwater. Steve and his wife are active members at First Christian Church, Stillwater. Steve has been the chairman of the Foundation's Grant Committee since its inception.



CLAIRE MEREDITH
Tulsa

Claire retired from ConocoPhillips in May 2012 after almost 35 years of service. She is a lifelong Disciple, serves as President of Phillips Theological Seminary Board, volunteers in the Kansas Food Bank front office and is actively involved with the Association of Disciple Musicians. In her spare time, she enjoys traveling, scuba diving, photography and time with her family.



DAVID ECK
Enid

David is a longtime Disciples member as is his wife, Kathy. They are both active members at Central Christian Church, Enid. David was general manager of Northcutt Chevrolet until his retirement in 2008. David served as treasurer, elder and chairman of various committees at Central Christian Church and he has faithfully and diligently served as treasurer of ODF Board.



MICKEY MOERY
Eufaula

Mickey is a lifelong Disciple born and raised in First Christian Church, Hennessey. Prior to his retirement in 2015, he served as pastor at Ames Christian Church, Ames and First Christian Church, Hennessey. He has been an active member of the Northwest Area Disciple Men's group, Regional Board and has been involved with the Caminante Mission.



INMAN L. JONES
Yukon

Inman is a longtime member of Wildewood Christian Church, Oklahoma City. He is active with the Central Area Disciple Men's group, Regional Board and has served in many leadership positions at his church including Board Chair and Congregation Song Leader. Inman currently works at Chickasaw Nation Industries as an Electronics Engineer.



CHRISTIN V. MUGG
Edmond

Christin is a member of First Christian Church, Edmond, where she has served in several leadership roles. Christin received a JD from Oklahoma City University School of Law in 1998 and a MBA from the University of Oklahoma in 1994. She established the law firm Mugg Winston in 2005 with a focus on estate planning and planned giving. She also serves as a trustee for the Oklahoma City Community Foundation.

** (Not pictured): Sally Kelley, Tulsa, retired Senior Vice President and Senior Trust Officer with Bank of Oklahoma in Tulsa.



MICHAEL OBERLENDER

Chickasha

Michael has served as minister of First Christian Church, Chickasha, since 2005. He holds a Bachelors degree in Business Admin. from Oklahoma State University and a Masters of Divinity from Phillips Theological Seminary. He and his wife Darla have four children and two grandchildren between them. Michael has served at the General and Regional Levels of the Church.



JOHN PEACH

Hennessey

John is owner of the Peach family ranching and farming business in northwestern Oklahoma. He and his wife, Carol, are active members at First Christian Church Hennessey where John is an Elder. He's currently serving his 38th year on the board of directors at the Bison Cooperative. He previously served on the Hennessey school board for ten years.



BILL RICHERT

Tulsa

Bill is president of Richert Properties in Tulsa and has been in the commercial real estate business for over 45 years. He specializes in the acquisition and disposition of large development tracts, investment properties and equity marketing as well as consulting with investors on solutions for marketing their real estate. Bill is a member at Harvard Ave. Christian Church, Tulsa.



RON SAVAGE

Treasurer

Duncan

Ron retired from Halliburton after 27 years then entered Phillips Theological Seminary where he received his Masters of Art in Ministry and Culture. Ron and his wife, Deborah, are active members of First Christian Church, Duncan. He has served a youth leader and counselor at many CYF events over the years including Water Weekend and IAS. He is also a Regional Elder.



SEI TOUTHANG

Broken Arrow

Sei received his Master of Divinity from International Theological Seminary, Los Angeles, CA as well as a M.A. in Christian Counseling and Doctor of Ministry from Oral Roberts University, Tulsa. Sei has been a Co-Minister at Yale Avenue Christian Church, Tulsa, since 2009 where he currently leads the International Mission Fellowship program.

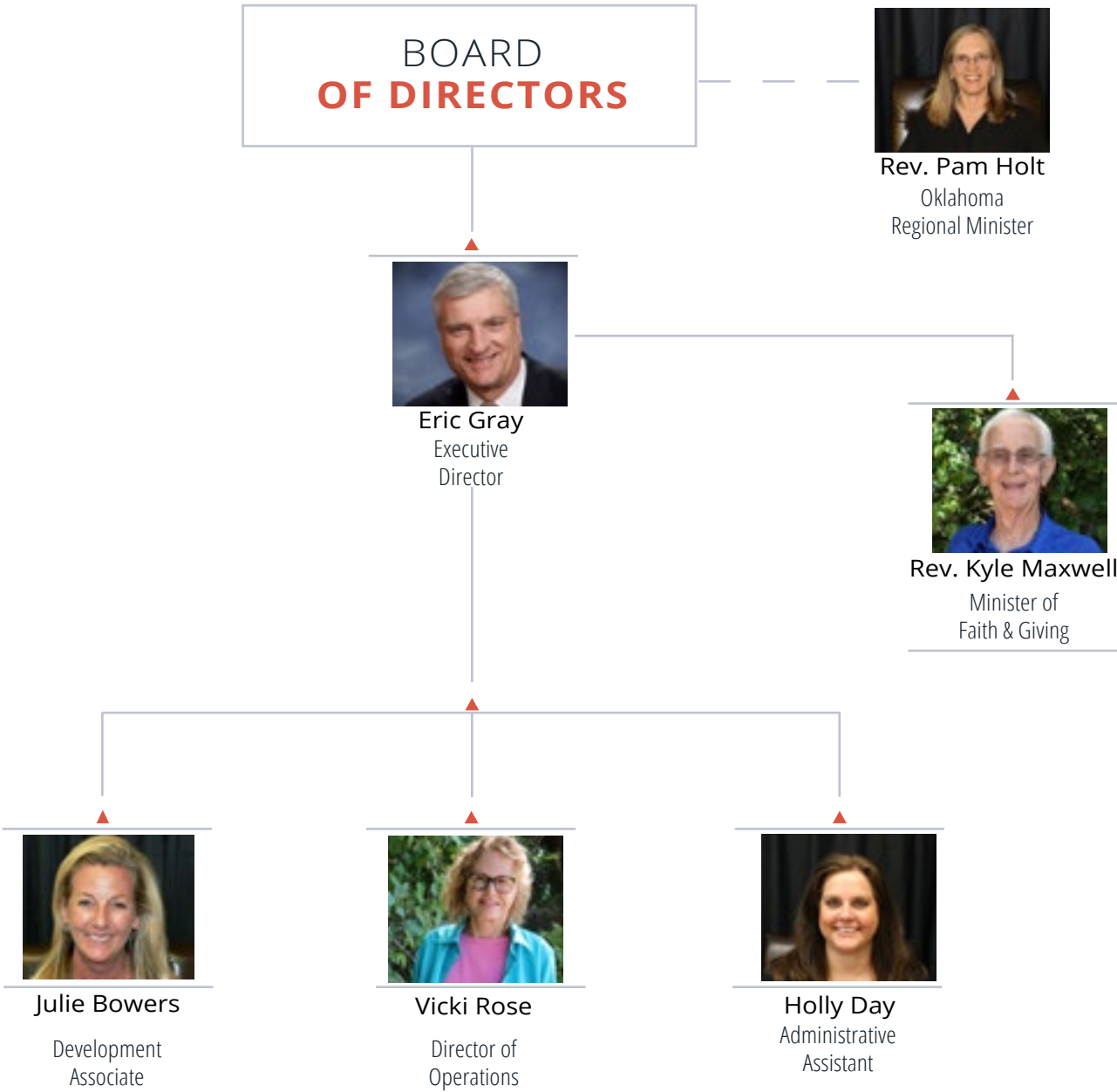


BOB WEITZEIL

Langley

Bob and his wife Lois are both retired pastors. Bob, originally from California earned his Master of Divinity from Claremont School of Theology, Claremont, CA in 1980 and Doctor of Ministry from Phillips Theological Seminary in 1996. Bob was the founding pastor of South Grant Lake Christian Church where he continues to serve as Pastor Emeritus.

OKLAHOMA DISCIPLES FOUNDATION, INC.
ORGANIZATION CHART/STAFF



The Executive Director is hired by the Board. The Executive Director has the day to day responsibility to carry out the Corporate goals and policies as determined by the Board. The Executive Director is also responsible for the daily supervision of staff and activities of the Corporation and acts on behalf of the Foundation in accordance with the direction of the Board. The Regional Minister of the Christian Church (Disciples of Christ) in Oklahoma is a nonvoting ex-officio member of the Board of Directors.

IMPACT
MAKING A DIFFERENCE

Serving As The Hands and Feet of Christ

This fall our church has established a new mission statement, “First Christian Church invites our neighbors to experience God’s radical love” and we feel the Hands and Feet program fits perfectly with it. Thank you for your support and encouragement of this program and we look forward to working together in the future!

Tax-deductible endowment contributions are combined into the [Named Endowments](#) pool and invested to provide maximum earnings while protecting the principal against inflation. By safeguarding these funds and growing the principal with new gifts, ODF is able to distribute much-needed income to many different ministries.

The First Christian Church, Edmond, Mission Endowment is a prime example of making a difference in lives across the world. This fund established by a generous donor has allowed FCC Edmond to continue its Disciples4Water outreach ministry in the Congo. Teams of volunteers have made several trips to the Congo to train and drill water wells in order to bring clean, fresh water to areas in need.

Eleven (as of 2019) permanent endowment funds benefit the Foundation's annual [Grants Program](#). The Foundation made grants totaling [\\$71,460.60](#) in 2018 and \$50,648.90 in 2017. Click to read the [September 2018 ODF Newsletter](#) highlighting grant recipient programs and missions.

ODF manages several annuities in-house which are invested with Vanguard. These funds continue to grow despite the significant amounts paid out annually to annuitants. It's been years since the Foundation has written new annuities some of which are administered by the Christian Church Foundation and about a dozen are managed in-house at ODF utilizing the services of PG Calc's gift annuity administration. In 2018, the Foundation's Board authorized staff to offer writing new annuities for which ODF is the beneficiary. The minimum age of the annuitant must be 65 with a minimum gift of 10,000.

The Foundation offers advice and hosts events/seminars on planned giving, stewardship, generosity within the church. In 2018, ODF hosted a stewardship event featuring guest speaker Dr. Clif Christopher nationwide speaker, pastor and author of several books including “Not Your Parents’ Offering Plate.” The event was held at First Christian Church, Moore, OK, and attended by more than 50 Disciples' ministers and lay leaders from across the state.



“
Thank you Oklahoma Disciples Foundation for giving me the opportunity through scholarship grants to take a trip that has reshaped how I love others and my outlook on life.
It was such an amazing experience that helped me grow in my faith and something I will never forget. I learned that although it is important to help people in your life that you know, it is just as important to help those overseas who do not have opportunities to know about God's love.
I hope the Oklahoma Disciples Foundation will continue to help young adults go on overseas mission trips.
”

*Photo left page:
ODF Board Member Sei Touthang and his daughters traveled to Boca Chica in the Dominican Republic to assist with the Caminante Ministry.*

*Photo right page:
Drill team members in the Congo learning about drilling clean water wells through Disciples4Water ministry, First Christian Church, Edmond.*



ANNUITIES
\$37,836.28
(administered by PGCalc)
\$7,515.00
(administered by CCF)

CHARITABLE REMAINDER
TRUSTS
\$14,515.28

2018 Payments to Gift Annuitants

2018 Payments to Charitable Remainder Trusts

The Foundation manages two Charitable Remainder Trusts and 19 annuities. Twelve of the annuities are administered by PG Calc and the remaining seven are administered by the Christian Church Foundation (CCF).

WE HOLD INSTITUTIONAL MEMORY

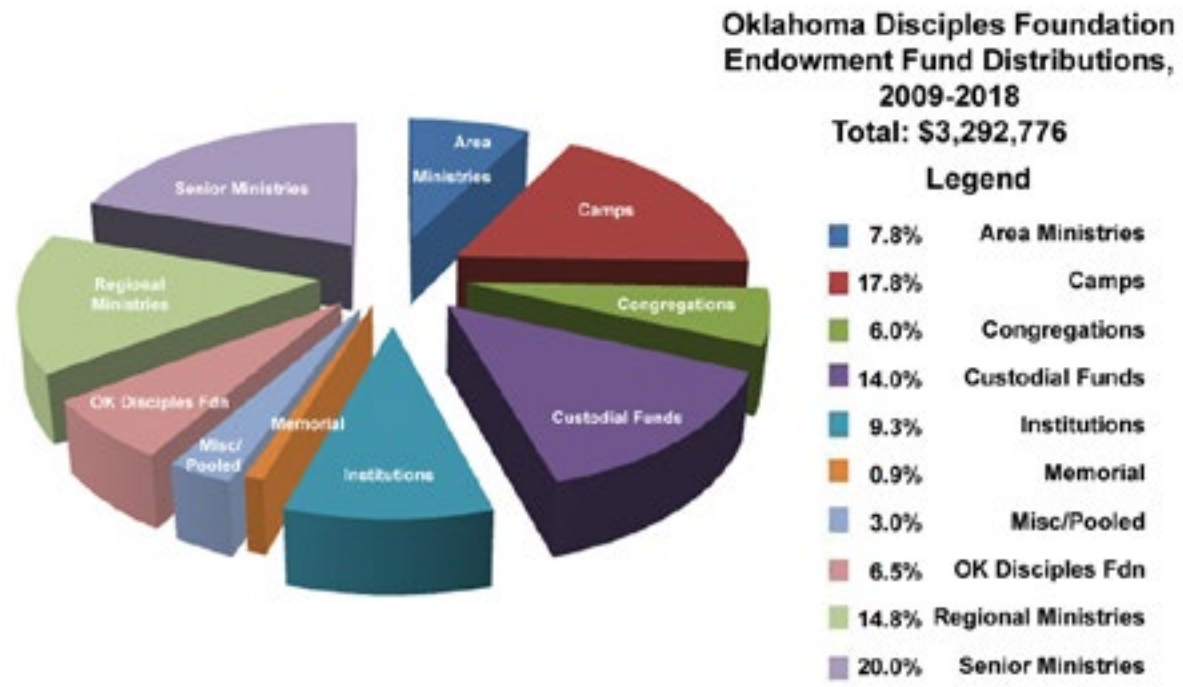
ENDOWMENT FUNDS
DISTRIBUTIONS

"Together We Touch Lives"



“For the church we need to talk about planned receiving. We need to identify church needs and uses for planned gifts as well as have appropriate gift acceptance policies and procedures in place. A planned gift comes from a motivated donor. As a church we need to tell donors why they should be motivated to give to the church and provide information which assures their gift will be used as intended.”

”



The ODF Spending and Investment Policies, Audited Financial Statements and a complete list of all Named Endowment Funds can be found on the website at www.okdfdn.org.

ENDOWMENT
DISTRIBUTIONS

\$3,292,776
Total endowment distributions from 2009-2018

MINISTRIES

In February of each year, earnings on named endowments for the previous year are paid to beneficiaries. Over a five-year period (2014-2018), these distributions from the named endowment funds totaled over \$1.9 million and averaged over \$391,275 per year. ODF distributions benefit a variety of ministries and programs of the Christian (Disciples of Christ) Church in Oklahoma, as shown in the chart. These programs and ministries include seniors, the region, areas (e.g., Central Area), camps and more.

CUSTODIAL
FUNDS

CHURCHES &
NON-PROFITS

ODF provides custodial funds management services through its Custodial Funds Management Program to Christian Church (Disciples of Christ) congregations and affiliated organizations in Oklahoma. The funds are managed as a sub-account of one of the three Custodial Funds Management Pools provided for under ODF's investment policy.

14.0%

Custodial funds portion of 2009-2018 distribution.

REGIONAL
MINISTRIES

CHRISTIAN CHURCH
IN OKLAHOMA

The Oklahoma Region of the Christian Church (Disciples of Christ) is the beneficiary or partial beneficiary of several permanent funds which subsidize regional operations and programs, salary of a Regional Youth/Children Pastor, Oklahoma disaster relief, pastoral support and other important ministries.

14.8%

Percentage of 2009-2018 distributions for Region.

- The 'congregation' category refers to endowment funds established to benefit specific churches, as well as missions of some of those churches.
- 'Institutions' refers to, for example, Phillips Theological Seminary and other educational organizations.
- There are four named endowment funds which have been set up to benefit ODF itself, allowing for operations as well as organizing workshops and seminars for both lay and clergy Disciples.

FINANCIAL REPORT
TRANSPARENCY

Audited Financials December 31, 2018

Bell & Rhodes, P.C. Certified Public Accounts, Oklahoma City, audited the financial statements of The Oklahoma Disciples Foundation which comprise the statement of financial position as of December 31, 2018, and the related statements of activities and changes in net assets, functional expenses, and cash flows for the year then ended, and the related notes to the financial statements. Their opinion was the financial statements present fairly the financial position of ODF for the year in accordance with accounting principles generally accepted in the United States of America.

THE OKLAHOMA DISCIPLES FOUNDATION FINANCIAL POSITION

Assets

Cash and cash equivalents	\$ 755,502
Cash-restricted	8,000
Interest receivable	15,415
Property and equipment-net	782,698
Investments	17,779,868
Prepaid rent	9,496
Other assets	1,000
Total assets	<u>\$ 19,351,979</u>

Liabilities and Net Assets

Liabilities

Accounts payable and accrued liabilities	\$ 15,578
Gift annuities income interests	308,084
Gift annuities remainder interests	96,067
Charitable remainder trusts income interests	103,490
Assets held as trustee for others	11,461,292
Total liabilities	<u>11,984,511</u>

Net Assets

Without donor restrictions	3,154,798
With donor restrictions	4,212,670
Total net assets	<u>7,367,468</u>
Total liabilities and net assets	<u>\$ 19,351,979</u>

The Oklahoma Disciples Foundation is a non-profit corporation statutorily exempt from federal income taxation under Section 501(c) (3) of the Internal Revenue Code. The Foundation is classified as a publicly supported organization rather than as a private foundation. Because it is a religious organization, the Foundation is not required to file income tax returns.

ODF receives gifts from individuals and organizations which are used to fund various charitable organizations

and projects throughout the state of Oklahoma. The Foundation manages endowed funds that have been established for the benefit of other organizations (Named Endowments). ODF also manages endowed funds, the proceeds of which are used to finance its operations (Operating Endowments). It also administers several charitable remainder trusts and charitable gift annuities, some of which ODF is the remainder interest beneficiary. For most of these funds the remainder beneficiary is an organization other than ODF.

ODF is authorized to charge a fee for administering certain noncustodial named endowment funds. The annual fee is .50% of the fair market of the fund as of December 31. The .50% is prorated on a monthly basis for new funds received during the year. The Foundation suspended this fee in 2017 and has not reinstated it.

A complete copy of the December 31, 2018 audit is available on our website: www.okdfdn.org.

STATEMENT OF ACTIVITIES & CHANGES IN NET ASSETS

	Without Donor Restrictions	With Donor Restrictions	Total
Revenues			
Donations	\$ 44,587	\$ -	\$ 44,587
Investment income	-	(374,540)	(374,540)
Rental income-net of expenses	19,890	-	19,890
Other income	65,483	-	65,483
Support provided by expiring time & purpose restrictions	438,663	(438,663)	-
Total revenue	<u>568,623</u>	<u>(813,203)</u>	<u>(244,580)</u>
Expenses			
Program	329,643	-	329,643
General and administrative	133,933	-	133,933
Fundraising	66,100	-	66,100
Total expenses	<u>529,676</u>	<u>-</u>	<u>529,676</u>
Change in net assets	38,947	(813,203)	(774,256)
Net assets-beginning of year	3,115,851	5,025,873	8,141,724
Net assets-end of year	<u>\$ 3,154,798</u>	<u>\$ 4,212,670</u>	<u>\$ 7,367,468</u>

ENDOWED FUNDS ASSET ALLOCATION GUIDELINES

The asset allocation guidelines as specified in the investment policy are shown below:

Asset Class	Benchmark	Range	Target
Domestic Equities	Variable	14%-80%	45%
International Equities	MSCI EAFE (net)	2%-30%	20%
Alternative Strategies	(Variable)	0%-30%	0%
Fixed Income Securities	Merrill Lynch 1-10 A-AAA	15%-50%	32%
Money Market & Cash Equivalents	Barclays 90 Day T-Bills	0%-10%	3%

The Foundation's [spending policy](#) provides that the annual distributions shall be calculated as 4.5% of the Investment Pool's average quarter-ending share price for the trailing twelve calendar quarters, not to exceed 5.5% or fall below 3.5% of the Investment Pool's most recent year-end share price. The Board may, at its discretion, modify the above formula and impute traditional income equal to 3.0% of the year ending FMV of each particular trust. It further provides that the annual distribution shall be limited in that it cannot reduce the fair market value of the trust below the fair value of the original gift. The annual distribution shall be approved by the Foundation's board at the first meeting of the year and be distributed as soon as possible thereafter.

OKLAHOMA DISCIPLES FOUNDATION, INC.

ON THE HORIZON: GOALS

*A Nonprofit Religious Organization Supporting
Christian Church (Disciples of Christ) Churches In Oklahoma*

The Oklahoma Disciples Foundation is the first choice of those individuals and churches wishing to create a legacy through an investment in the future of the Christian Church. ODF is known for being an extraordinary steward of the funds entrusted to it and producing significant results. The relationships they have built have resulted in significant investments in ODF funds which support God's ministry today and in the future. The impact of those funds will continue to enable Disciples to be the hands and feet of Jesus.

- **Invest and nurture the human infrastructure of ODF to ensure the sustainability of the Foundation.**
- **Increase awareness of the Foundation so ODF is top of mind when individuals and/or churches want to invest in a ministry or in the future of the Church.**
- **Increase the funds available and distributed to support the ministries of the Church by 10% per year for the next five years.**



Oklahoma Disciples Foundation, Inc.
301 NW 36th Street
Oklahoma City, OK 73118
Eric S. Gray, Executive Director
egray@okdfdn.org
www.okdfdn.org